

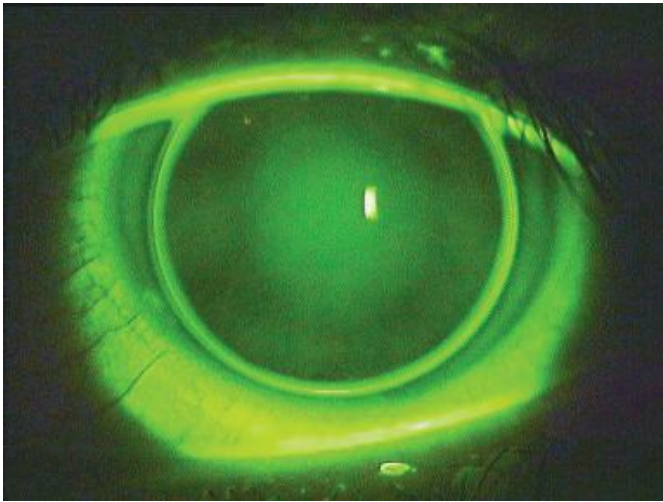
## CASE STUDY

Patient CB

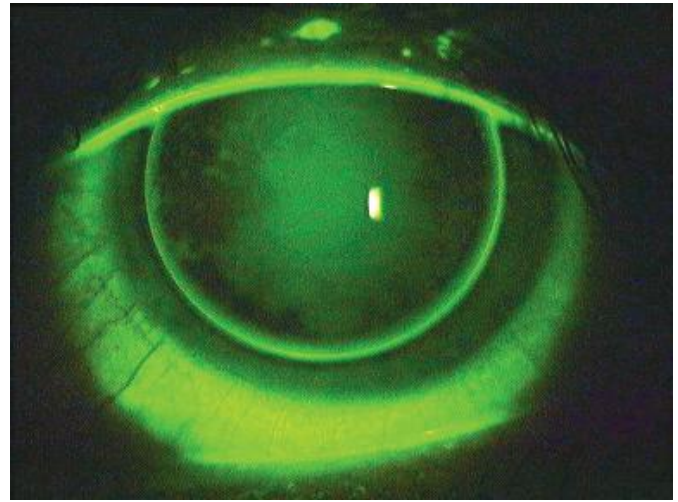
K Readings 7.90 / 7.85

BC 7.85 (0.05 steeper than the Flat K)

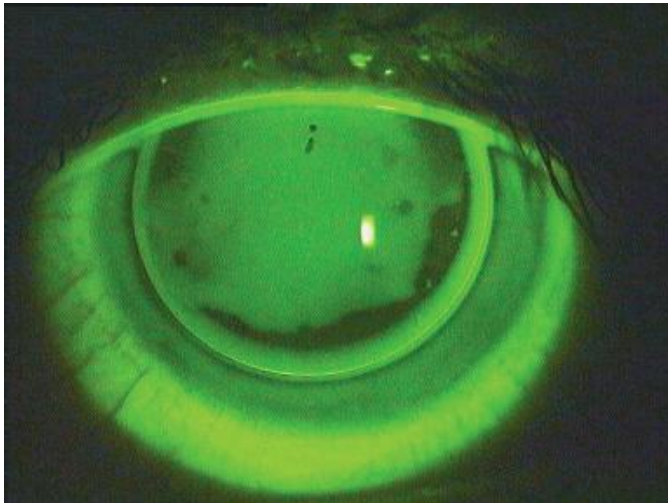
Gelflex   
Australian contact lenses



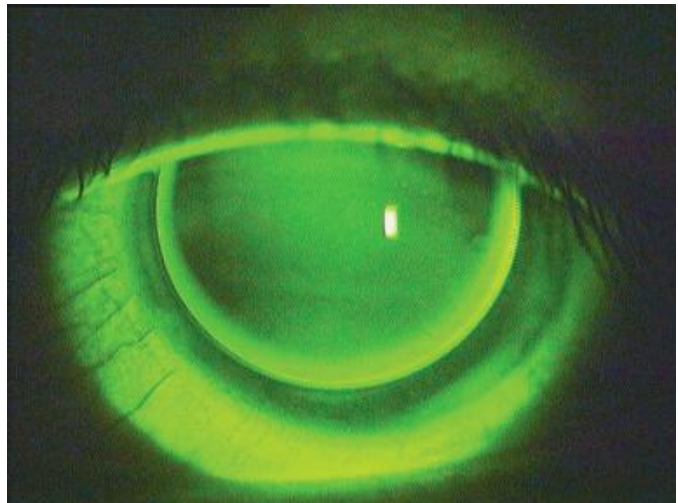
**TRICURVE 7.60/9.50** Very steep, looks only a little steep but fluorescein not getting under as it is sealed off.



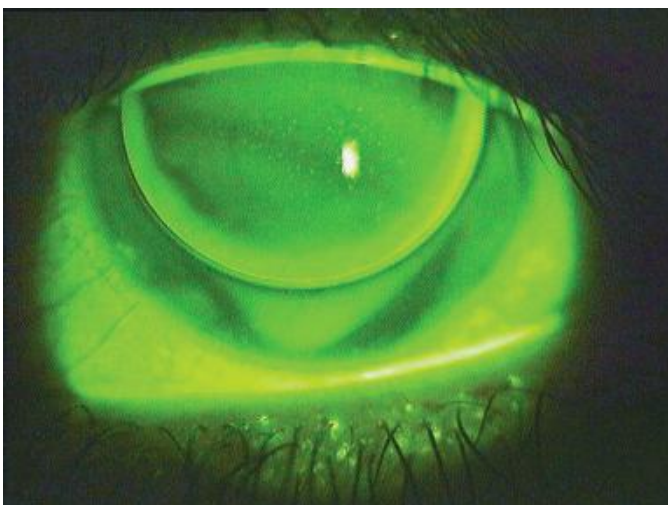
**TRICURVE 7.70/9.50** Still steep.



**TRICURVE 7.80/9.50** About the correct base curve but photo shows fluorescein on front surface of the lens.



**TRICURVE 7.90/9.50** Good fit.



**TRICURVE 8.00/9.50** Flat fit and lens is starting to ride higher.